



The **GAF Elevation Suite** provides extremely accurate very-high and high-resolution digital elevation models and 3D models based on GAF's longstanding know-how, as one of Europe's most experienced geoinformation service providers.







GAF's elevation products are reproducible, reliable and can be generated for areas anywhere in the world. These products are fully quality controlled and can be tailored to customer requirements.

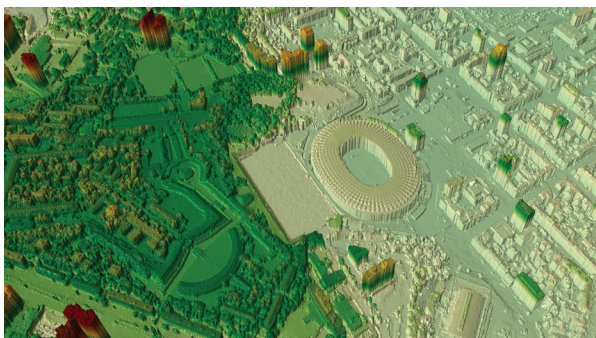
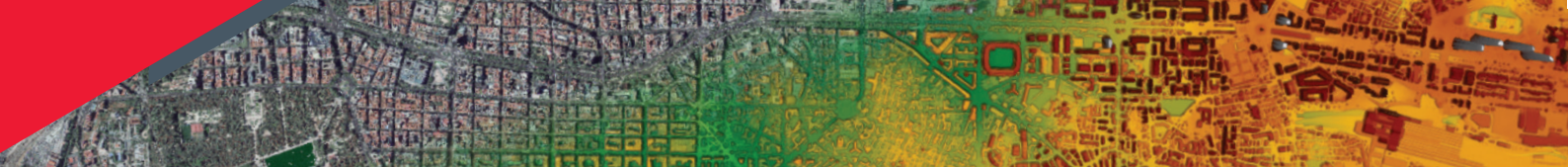
TO WHOM

				
B2B	INTER-/NATIONAL AUTHORITIES	DEFENCE & INTELLIGENCE	AGRICULTURE	GEOLOGY
				...
URBAN PLANNING	INFRASTRUCTURE PLANNING	EMERGENCY PLANNING	DISASTER RISK MANAGEMENT	AND MANY MORE

GAF has a permanent team of experts for producing and editing digital elevation models and derived products. Over the last 12 years, GAF has developed and optimised - together with the Remote Sensing Technology Institute (IMF) of the German Aerospace Center (DLR) - a highly automated multisource production line that has already been used for generating a multitude of DSMs and derived products for a total area of more than 8 million km². The workflow is continuously being enhanced, based on increasing practical experience and scientific developments, to integrate newly available systems and accommodate up-coming demands. It is also completely quality controlled and fully implemented within GAF's infrastructure.

CAPABILITIES

		
FLEXIBLE	RELIABLE	RAPID DELIVERY
		
MULTI-SOURCE BASE DATA	CUSTOMER SPECIFIC PRODUCTS	QUALITY CONTROLLED



50 cm Tri-Stereo DSM Kiev, Ukraine

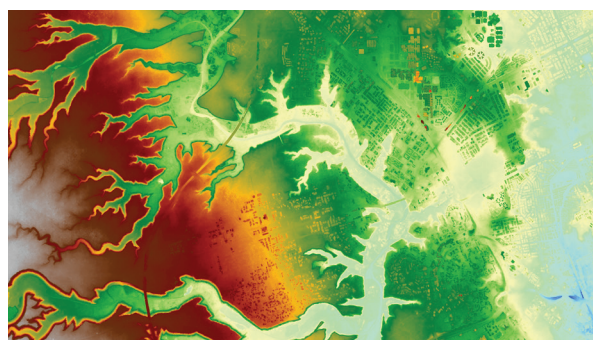
Multi-Stereo VHR DSM 0.3 and 0.5

Based on the current highest resolution satellite images, these products meet the highest demands in terms of accuracy and reliability, especially for cities and critical infrastructure. These DSMs can be constantly updated as a result of the good availability and high agility of VHR satellites.

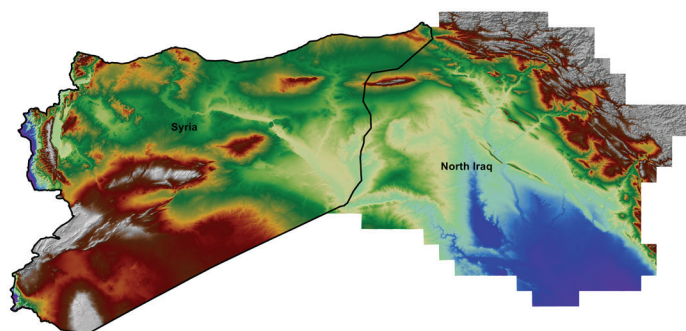
Multi-Stereo HR DSM 2.0

This product is the optimal solution for cost-efficient regional coverage with up-to-date and highly detailed data.

These characteristics and the fast availability of newly acquired data make it the perfect alternative between the highest resolution models for cities and the (trans-)national Euro-Maps 3D DSMs.



2 m Tri-Stereo DSM Riyadh, Saudi Arabia



5 m Euro-Maps 3D DSM Syria and Northern Iraq

Euro-Maps 3D

is a perfect combination of a high level of detail with a resolution of 5 m, providing transnational coverage and cost-efficiency.

There is also a Euro-Maps 3D for Ortho product, which provides a perfect x, y and z reference model for the orthorectification of VHR images.

3D Models

3D surface model with facade texture information derived from very high resolution, multi-sensor satellite images.

Available file formats are:
glTF, Cesium b3dm or PLY



50 cm Textured 3D Model Rio de Janeiro, Brazil



All the products are delivered with various quality and traceability layers. DSMs with a different resolution and DTM products are available on-request

For further information or demo data please contact
data@gaf.de



© 2020, GAF AG & © ANTRIX, CNES & MAXAR (2015-2018), distributed by AIRBUS DS & European Space Imaging