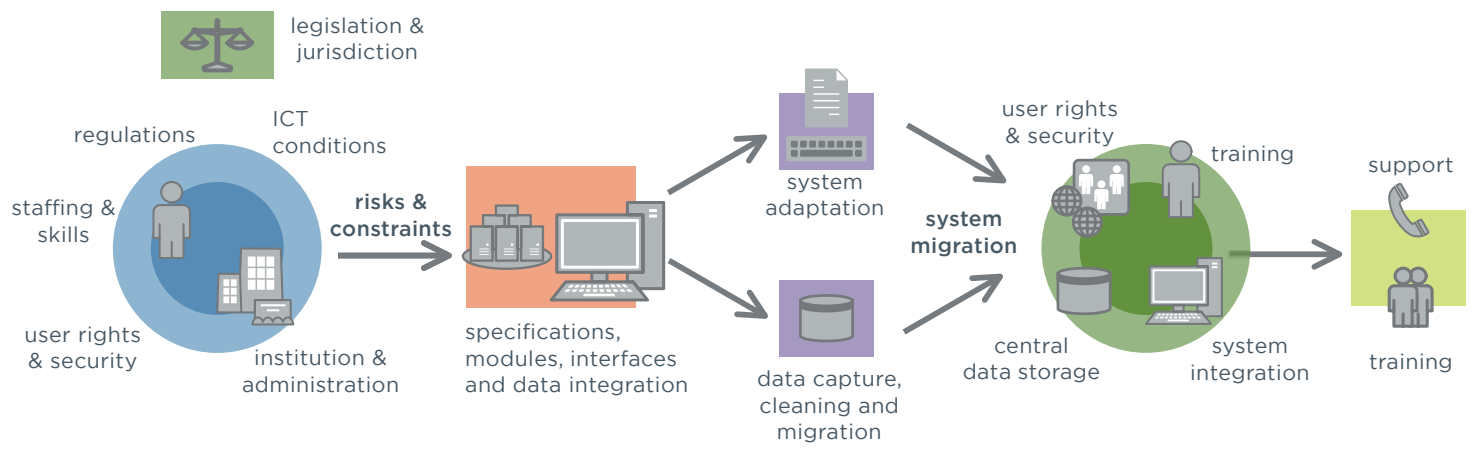


The **eMC+** encompasses GAF's framework for providing Mining Cadastre authorities worldwide with a complete package of services and a software tailored to the specific requirements of the cadastre domain. The system is designed to increase institutional capacities and efficiency by delivering a comprehensive mineral tenure management solution.

eMC+ FRAMEWORK SERVICES



Mining information management

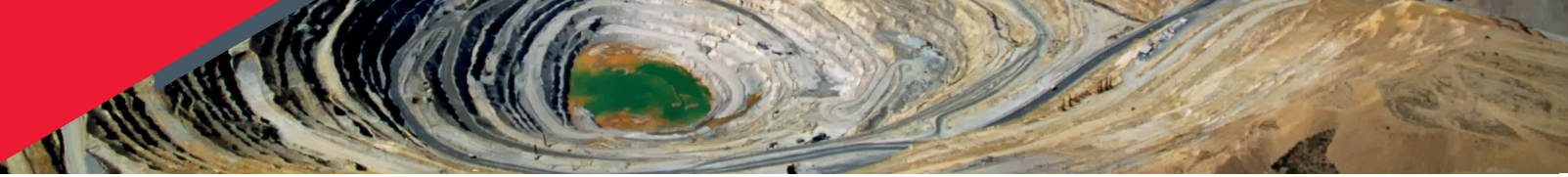
No vendor-lock in

Customised for Mining Cadastre authorities worldwide

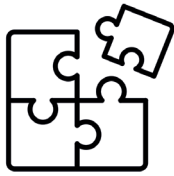
EITI compliant

Open-Source based

**On-premise or cloud/
data-center installation**



SOFTWARE PLATFORM



The eMC+ platform includes a scalable, open, and GIS- and web-based mineral tenure management platform with configurable workflows and business rules.

Through its modular design, it allows you to establish a tailored solution by only selecting the components that are actually needed. eMC+ provides an efficient way to manage mineral tenures.

TAILORED SERVICES

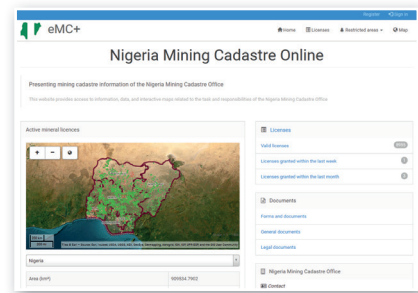


The eMC+ framework provides all services relevant to a sustainable implementation of a modern Mining Cadastre.

Whether it is the analysis of the legal basis or procedures, requirements specification, data consolidation and migration, or capacity building: eMC+ delivers the support and helps strengthening the capacities of your organisation.

TECHNICAL ASSETS

- Install on Cloud/data-center or on-premise servers
- No additional costs for 3rd party software licences
- Compatible to COTS GIS desktop software
- Automated notifications to customers by email or SMS
- Entirely web-based and scalable
- Responsive design (supports PC, tables, mobile devices)
- Multi-lingual
- ISO & OGC compliant and interoperable



ADVANTAGES FOR YOUR ORGANISATION

- Enforcement of legal framework and policies
- Ensuring ownership rights
- Higher peak throughput capacity and faster processing of applications
- Access to capacity building, knowledge transfer, and training
- Coherence between paper cadastre and computerised system
- Improved monitoring and retrieval of fees and royalties
- Inherent statistical and economic analysis capability
- Scalable system according to your organisational demands in terms of users and storage



eMC+ Product Information

For further information please contact emc+@gaf.de

© GAF AG, 2023, © Royce L. Bair - 123rf.com; © Martin Str - pixabay.de; © flaticon.com